



# Rhino Easter Camp - HAF Bookings

Please find enclosed a step-by-step guide on how to sign your child up for Rhino Easter Camp, using the new HAF system. Alternatively, you can also provide us with the information we require and we can book it for you if you find that easier, please just let us know what is easiest for you.

**Rhino Sports Academy are eligible for HAF funding. If your child is a pupil premium student or receives free school meals then they will be eligible for free bookings at our camps. We will also provide lunch to these children.**

Either:

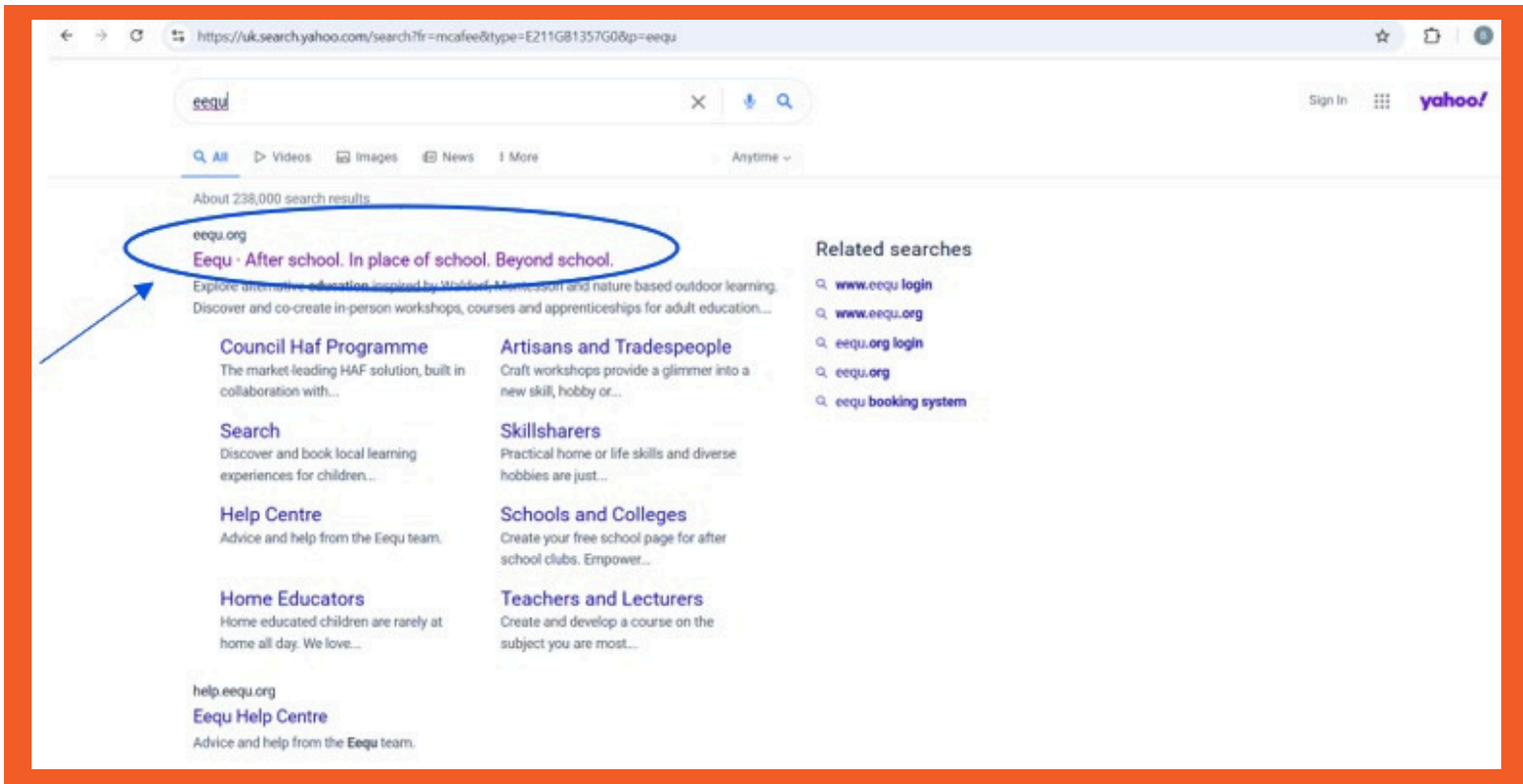
Use the QR code below and scan this to access the EEQU bookings page for here at The Good Shepherd Primary School, and follow the guide to make your booking:



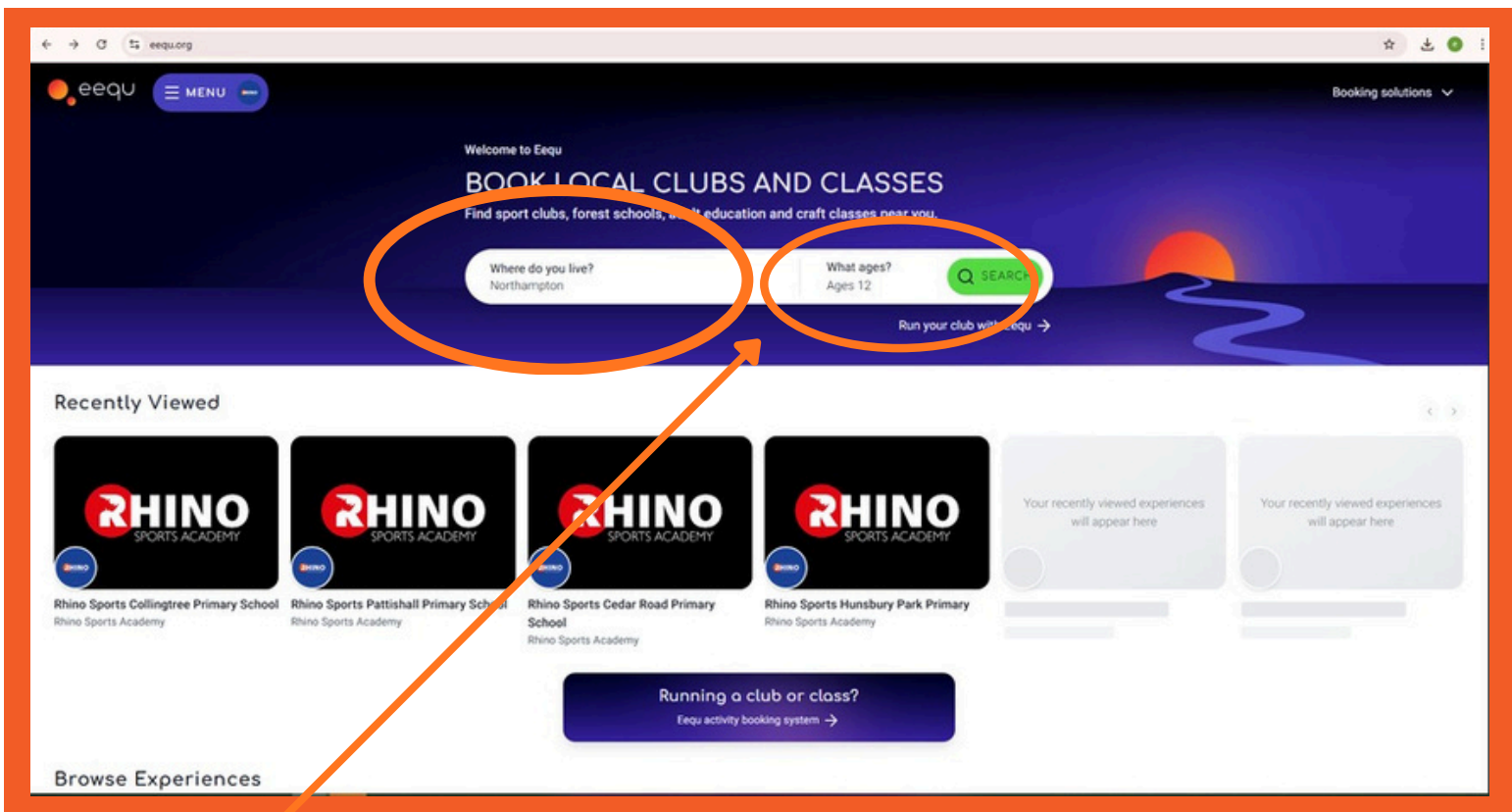
**OR** use the guide below and use the search engine to find the HAF bookings website:

<https://eequ.org>

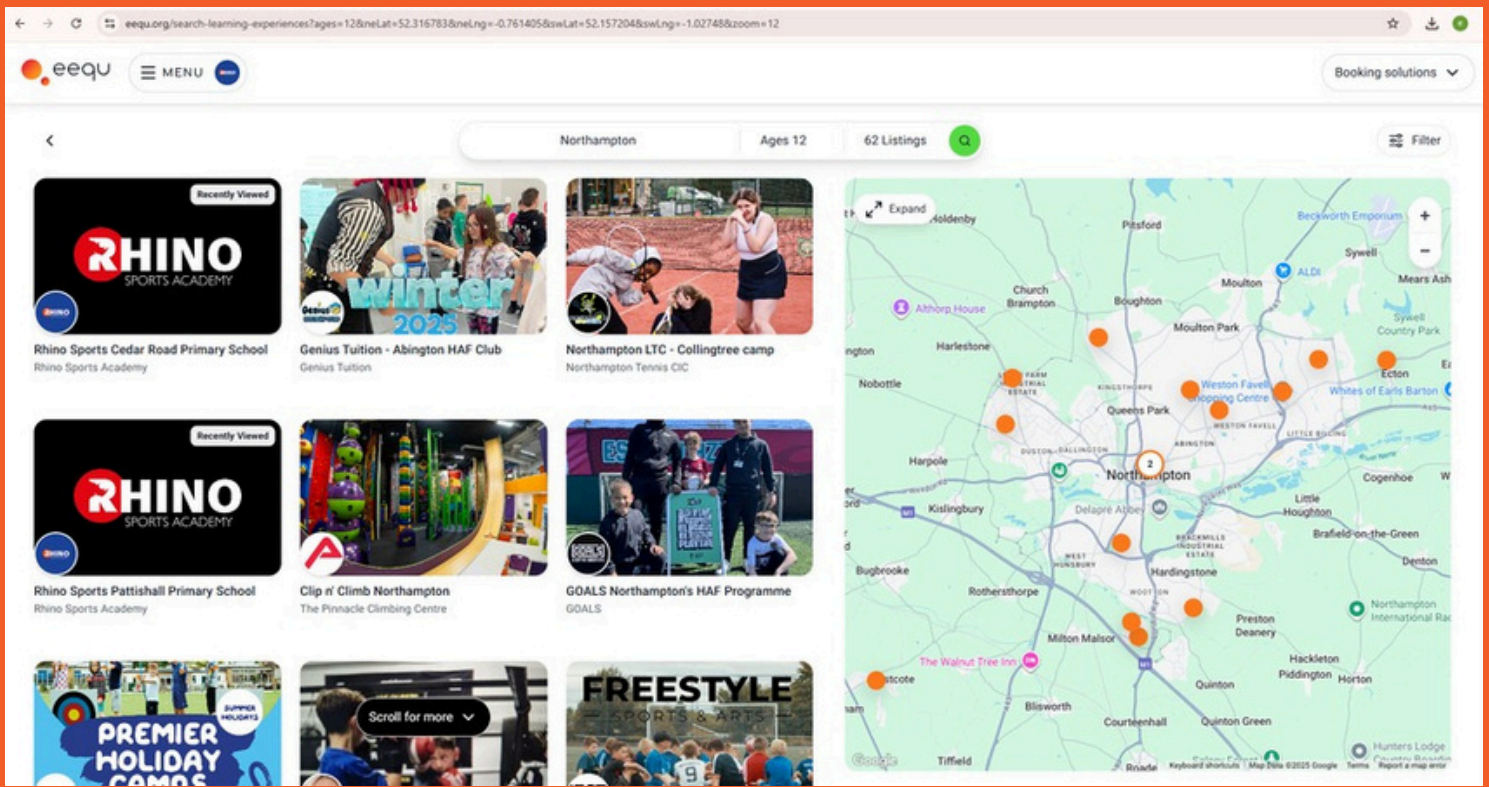
If you have any issues please don't hesitate to contact us on 01604 213900 or email us on: [enquiries@rhinosportsacademy.co.uk](mailto:enquiries@rhinosportsacademy.co.uk)



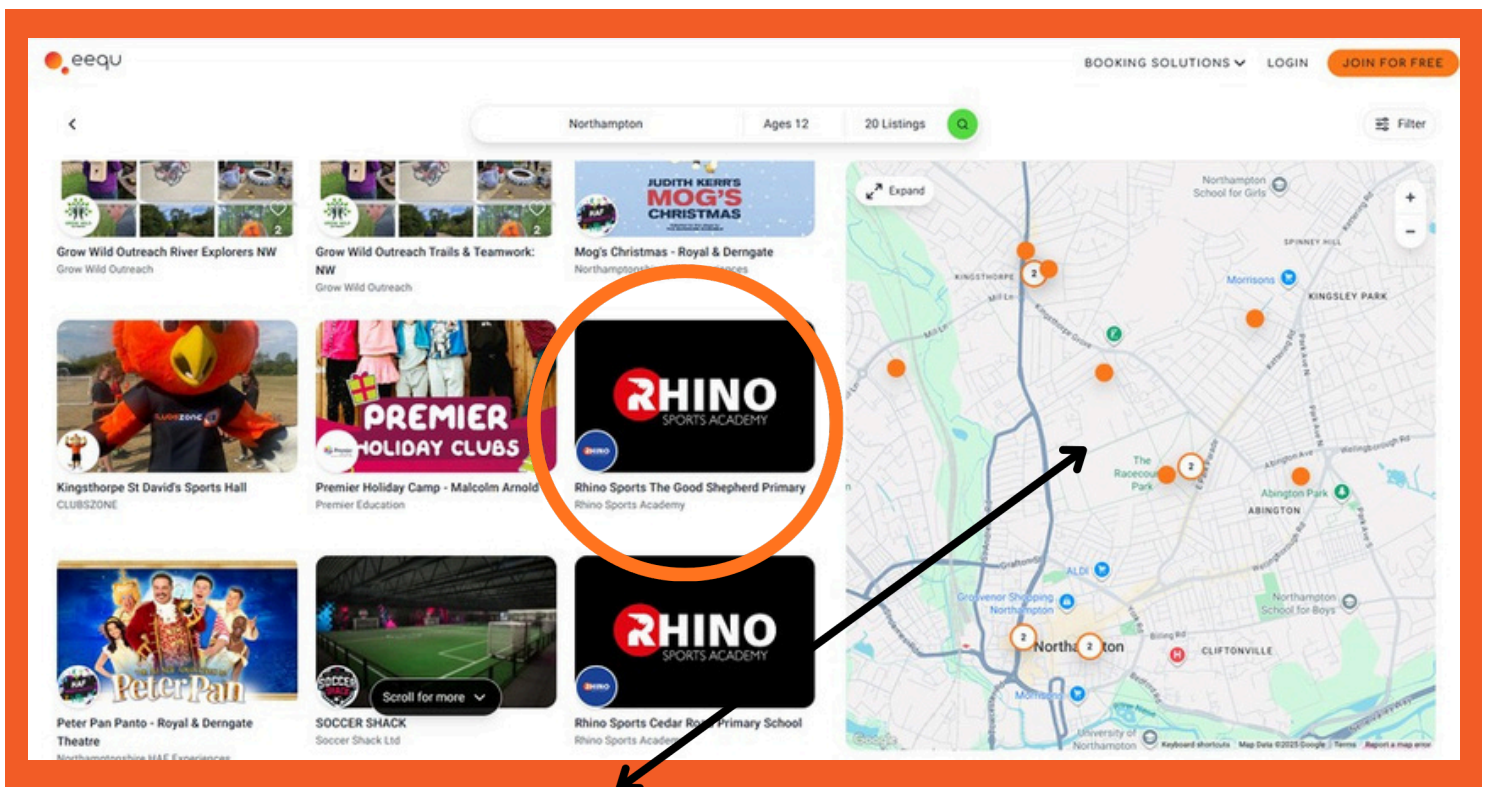
**Step 1:** Use your search engine to search for EEQU website - <https://eequ.org> and click on the first website that comes up.



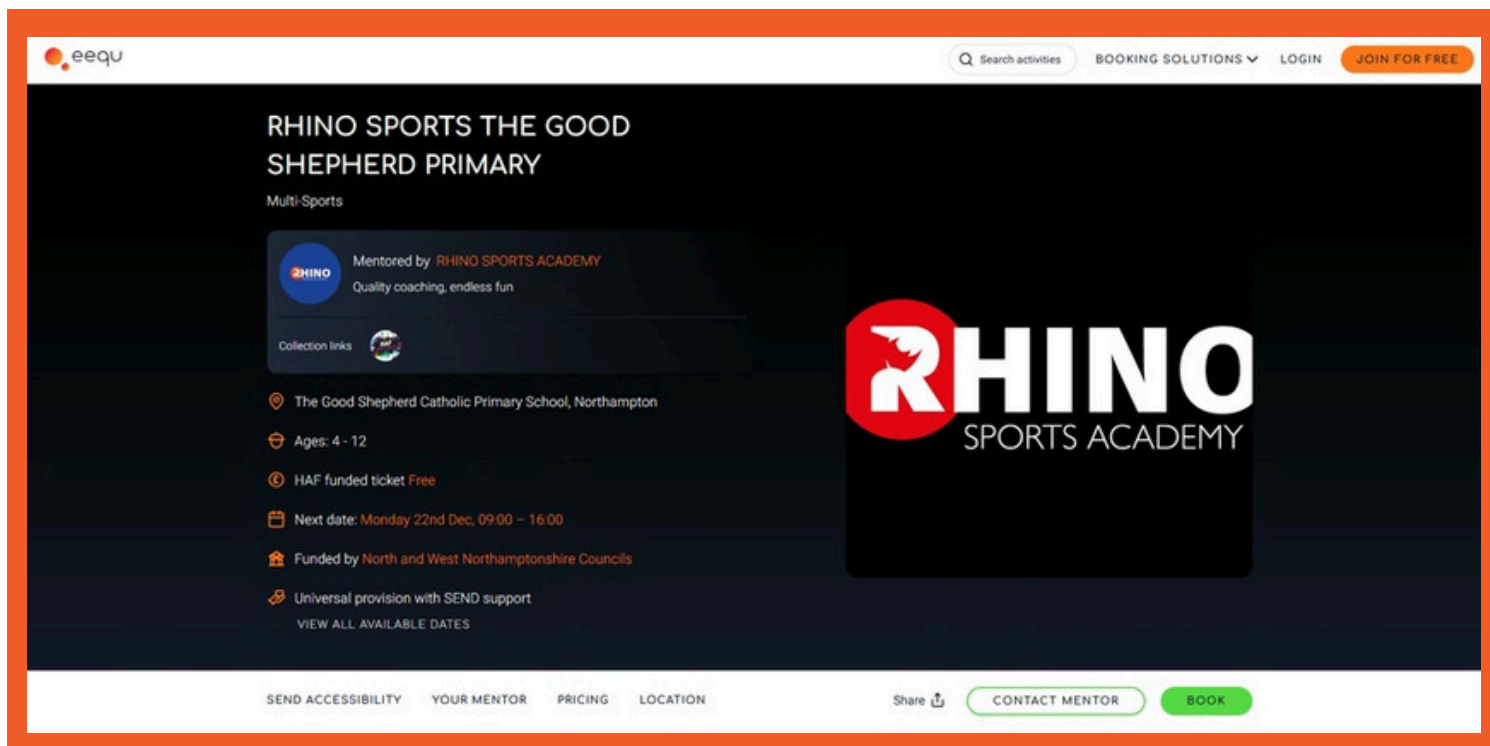
**Step 2:** Once you have clicked on the website it will bring you to this page. In the search bar you can input Northampton for the location and Aged under 12 in the next box and then click search.



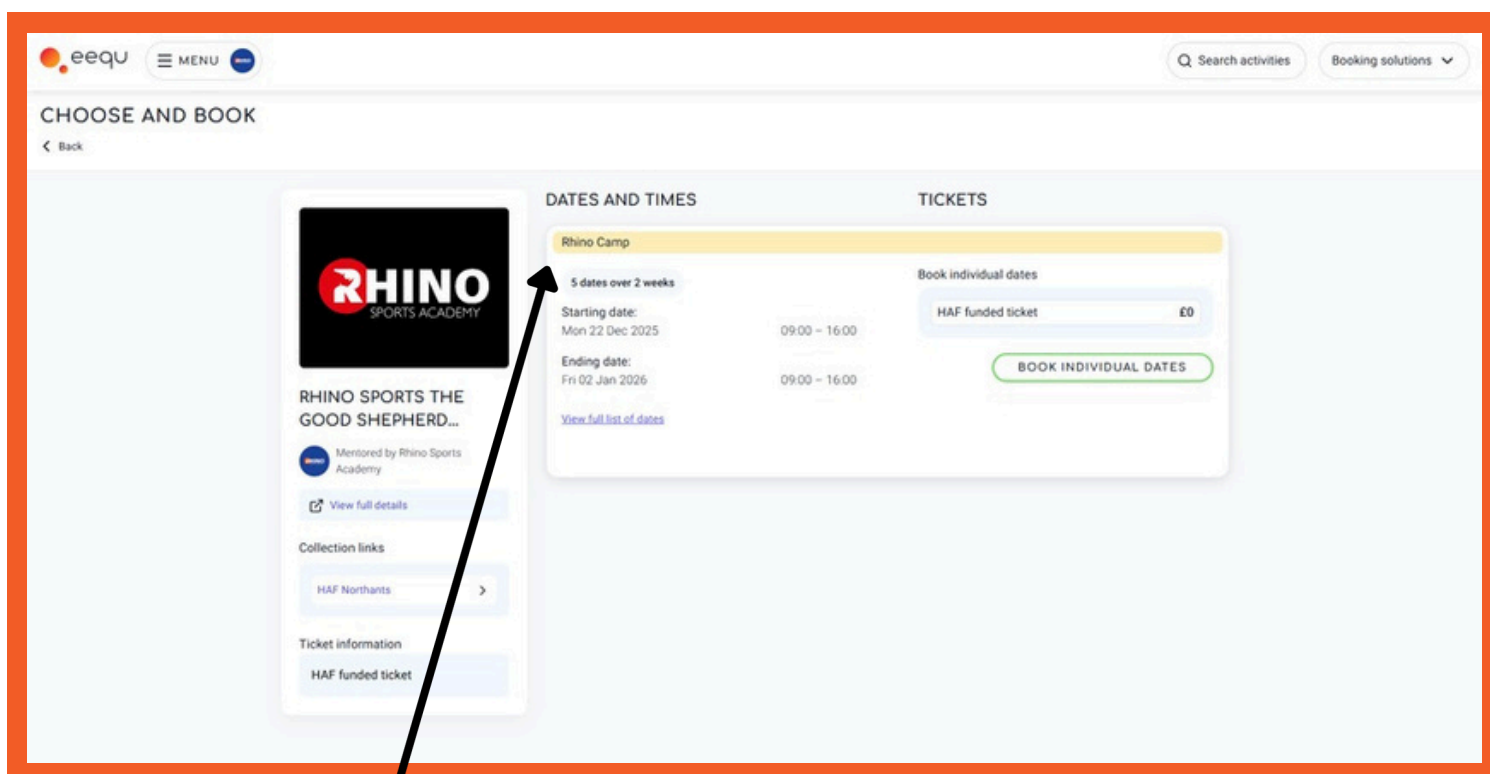
**Step 3:** Once you have pressed search this page will pop up with all the of the activities in the area.



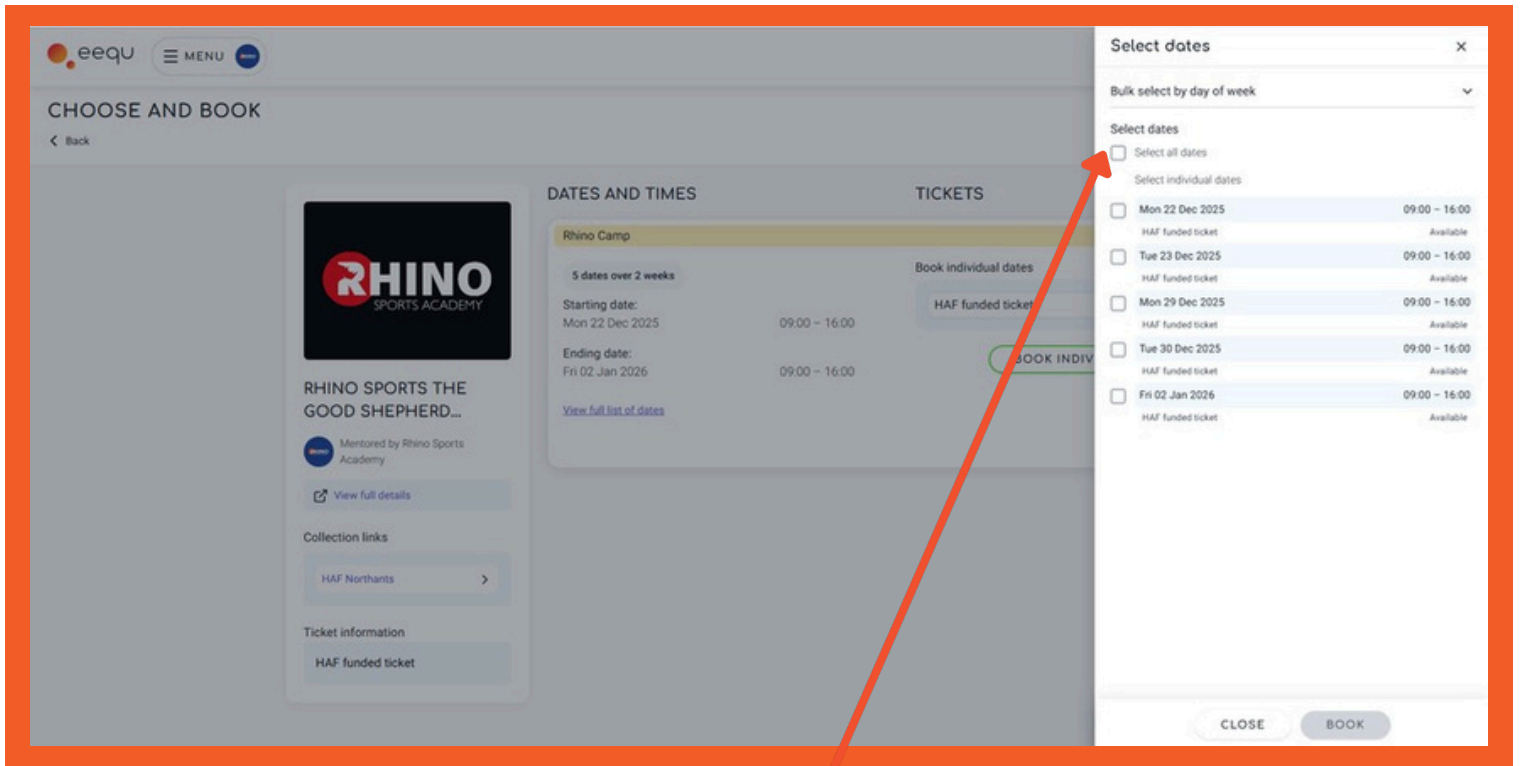
**Step 4:** If you zoom into your area on the map then it will bring up more local activities - e.g. I have zoomed into town/Kingsthorpe area and it has shown The Good Shepherd Primary School as a venue. Click on the venue you want to attend.



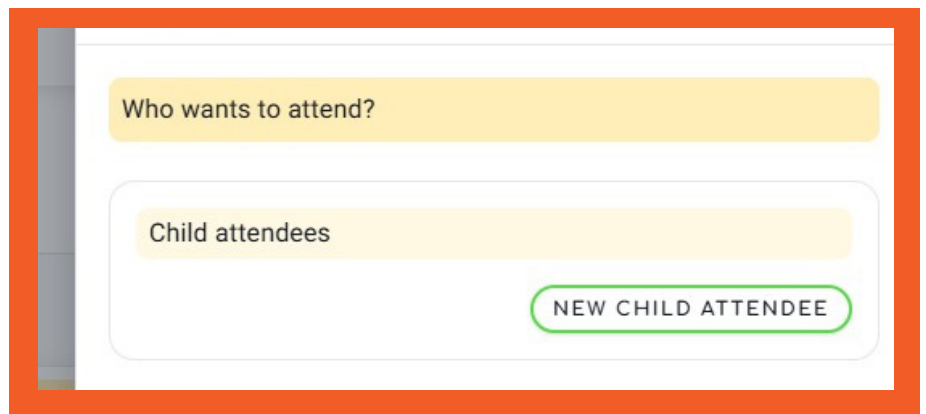
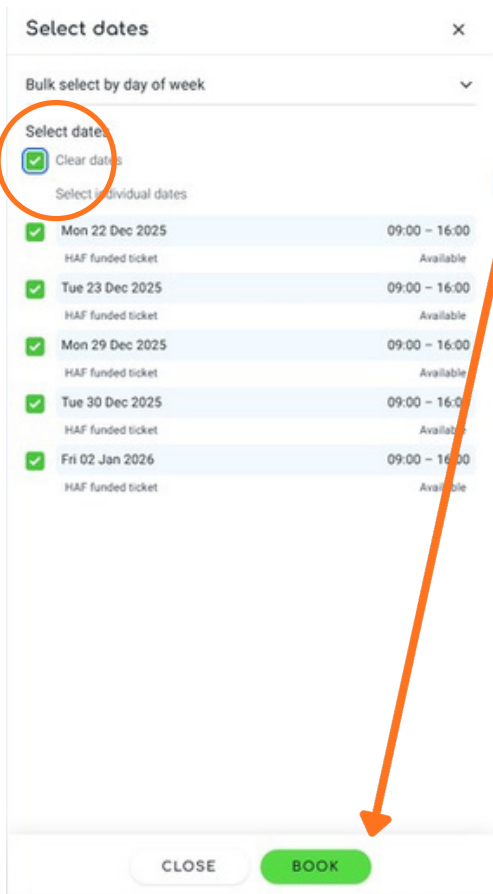
**Step 5:** Here it shows you what activities we are offering throughout the week and you can check which activity you wanted to be booked onto. Once you have decided you can then press 'Book' in the bottom right hand side.



**Step 6:** After you have clicked on 'Book' you will be taken to this page which shows you which dates and activities we have. You will see at The Good Shepherd we are offering Rhino Camp which is a combination of all activities: Multi-sports, Arts and Crafts and Performing Arts. They will do a few activities of each throughout the day. Press the green button to book on.



**Step 7:** When you have clicked the green button this pop up screen will appear on the right hand side. This is where you can select which dates you are going to be attending. Click the little boxes on whichever dates you want to go to and then the 'Next' button at the bottom right will go green, select that and it will take you to the next step.



**Step 8:** The next pop up will appear and this will be where you can add your child. If you click 'New Child attendee' then you can input their details.

Who wants to attend?

Child attendees

First name: John

Last name: Smith

Date of birth: 10 / 01 / 2019

CANCEL SAVE CHILD ATTENDEE

This screenshot shows a form titled "Who wants to attend?". Under the heading "Child attendees", there are three input fields: "First name" containing "John", "Last name" containing "Smith", and "Date of birth" containing "10 / 01 / 2019". At the bottom of the form are two buttons: a grey "CANCEL" button and a green "SAVE CHILD ATTENDEE" button. A red border highlights the entire form area, and a black arrow points from the bottom right corner of the form towards the text of Step 10.

**Step 9:** Here is where you will fill in your child's name and date of birth. As you can see from the example there are 2 boxes for first name and last name and the date of birth section will come up with a small calendar for you to select from. Once it is filled in, click on the green button 'Save child attendee'

1 Attendees 3 Additional information

Who will be attending?

Child attendees (under 18)

John Smith 10/01/2019 Edit profile

NEW CHILD ATTENDEE

Optional message for your Mentor

Include anything you'd like your mentor to know (which isn't already in your profile notes).

NEXT

This screenshot shows the "Attendees" screen. At the top, there are two tabs: "1 Attendees" (active) and "3 Additional information". Below the heading "Who will be attending?", there is a section for "Child attendees (under 18)". A list shows one attendee: "John Smith" with a green checkmark, the date "10/01/2019", and a blue "Edit profile" link. Below the list is a green "NEW CHILD ATTENDEE" button. Further down is a text area for an "Optional message for your Mentor" with the placeholder text "Include anything you'd like your mentor to know (which isn't already in your profile notes)". At the bottom right, there is a green "NEXT" button. A red border highlights the entire screen, and a black arrow points from the "NEXT" button towards the text of Step 10.

**Step 10:** The next screen to appear will be this where you will then select the small box and it will come up with a green tick. If you have entered any information wrong you can still change it by pressing 'Edit profile'. Once done, press the bottom right green button 'Next'.

eequ MENU

Search activities Booking solutions

Attendees Additional information Request booking

Extra questions from Rhino Sports Academy

**ATTENDEES**

First name: John Last name: Smith

Date of birth: 10 / 01 / 2019

This experience only accepts ages 4 - 12

Please confirm that this child is eligible for **benefits related Free School Meals**:

Yes - I am eligible

Please also tick any other statements that apply to this child. Please note, this does not guarantee a free place.

SEND  
 Asylum seeker or refugee  
 Looked after child  
 Young carer  
 EHCP (Education Health Care Plan)  
 Child Protection Plan in place  
 Parent/carer receives universal credit

BACK NEXT

Rhino Sports Hunsbury Park Primary  
 For ages: 4 - 12  
 Mentored by Rhino Sports Academy

Hunsbury Park Primary School, Dayrell Road, Northampton, West Northamptonshire, NN4 9RR

Mon 29 Dec 2025	09:00 - 16:00
Tue 30 Dec 2025	09:00 - 16:00
Fri 02 Jan 2026	09:00 - 16:00

1 x attendee

Subtotal: £0  
 Total: £0

Ticket information

Cancellation policy for this listing  
 My experience consists of a leisure activity on a specific date(s), and therefore the 14-day cooling

**Step 11:** Now that you have filled in their details you need to click on the box that says ‘Yes – I am eligible’ and then scroll down the page and complete the tickboxes to the best of your knowledge.

eequ MENU

Search activities Booking solutions

If you ticked "other" please explain here:  
 Add your answer here (0/255)

Select the type of school this child attends:  
 Select an option

What is the name of this child's school?  
 Select an option

Does your child receive extra support at school?  
 Select an option

Does this child have any allergies? If yes, give details below.  
 Select an option

Please state any allergies this child has:  
 Add your answer here (0/255)

Please select any dietary requirements for this attendee:

None  
 Vegetarian  
 Vegan  
 Dairy-free  
 Egg-free  
 Wheat-free  
 Gluten-free  
 Nut-free

BACK NEXT

places are limited, please contact us you cannot attend so that your place can be offered to someone else.

**Step 12:** As you scroll down more questions will appear. Click the drop down menu to select the choices.

For the other drop down menus please input if they need extra support and if there are any allergies/ dietary requirements that we need to be made aware of.

eequ MENU

Search activities Booking solutions

If this child has a medical condition, is this likely to cause difficulties in participating?  
Select an option

If this child has any medical conditions or medical requirements, give full details:  
Add your answer here

Please tick any SEND that this child has:

- Moderate Learning Difficulties (MLD)
- Severe Learning Difficulties (SLD)
- Profound and Multiple Learning Difficulties (PMLD)
- Dyslexia/ Dyscalculia
- Dyspraxia
- Interaction
- Speech, language and communication needs
- Autism
- Anxiety
- Depression
- ADHD
- ADD
- Attachment Disorder
- Sensory and/or Physical Needs
- Visual Impairment
- Hearing Impairment
- Multi-sensory Impairment
- Physical Disability
- Other

Can you suggest any support or adjustments that would help?

BACK NEXT

**Step 13:** The next page to pop up will be this one which is where you can input your child's needs if they have any. It will be really useful for us if they do, to include any coping mechanisms so we can make sure they have an enjoyable time and we have as much information to make sure we can manage their needs effectively. E.g. they need to have 5 minute brain breaks, they need a fidget toy, they need clear instructions, etc. There will be a few more questions that need answering underneath such as ethnicity, photo permissions and gender.

**ADULT BOOKER**

Add your phone number  
+44 1604 213900

Please provide your postcode:  
Add your answer here

Which local authority do you live in:  
Select an option

Please provide the name of a second emergency contact:  
Add your answer here

Please provide the phone number of your second emergency contact:  
Add your answer here

I give permission for the provider to administer first aid:  
Select an option

Would you like to be invited to give feedback about HAF to researchers from the University of Northampton? [More info](#)  
Select an option

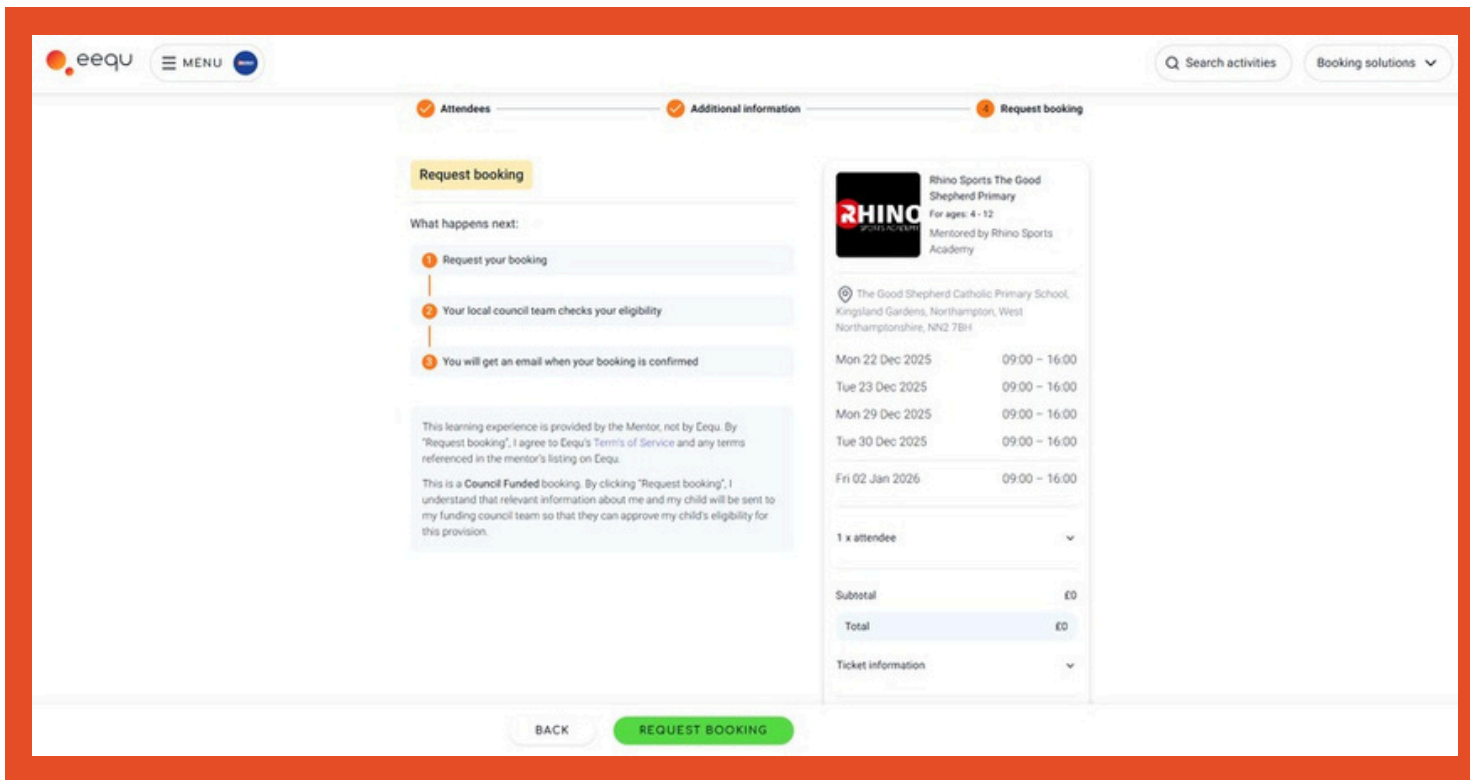
Do you consent for your child to give feedback to researchers about what they like to do while at the holiday clubs? [More info](#)  
Select an option

I am happy to receive updates about the HAF programme from Northamptonshire HAF team.  
Select an option

I have read and accept [Northamptonshire Sport's Privacy Notice](#)  
 I accept  
 I'm happy for Rhino Sports Academy to send me newsletters and updates

BACK NEXT

**Step 14:** Continue scrolling down and you will see this section about the Adult's details. Please provide all of the information using the drop down boxes and inputting the information required. You will also need to provide a secondary emergency contact incase we cannot get hold of you for any reason. **Step 15:** As you continue down the page there are a few more questions that need answering. Please read and answer carefully. Once you have filled in all of the questions you can then press 'NEXT' at the bottom and it will take you to the last page. Please double check everything before pressing next. Please check you have read and accepted the Privacy Notice and have selected to be updated with the Rhino newsletters!

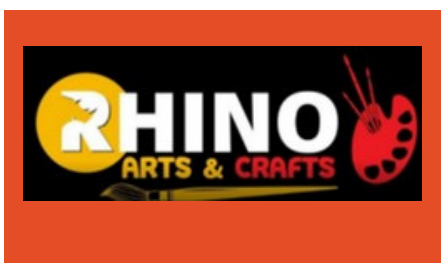


**Step 16:** This last screen is where you then need to press 'REQUEST BOOKING' and it will go through the system to be authorised.

### **A reminder of what we've got on offer at our camps:**



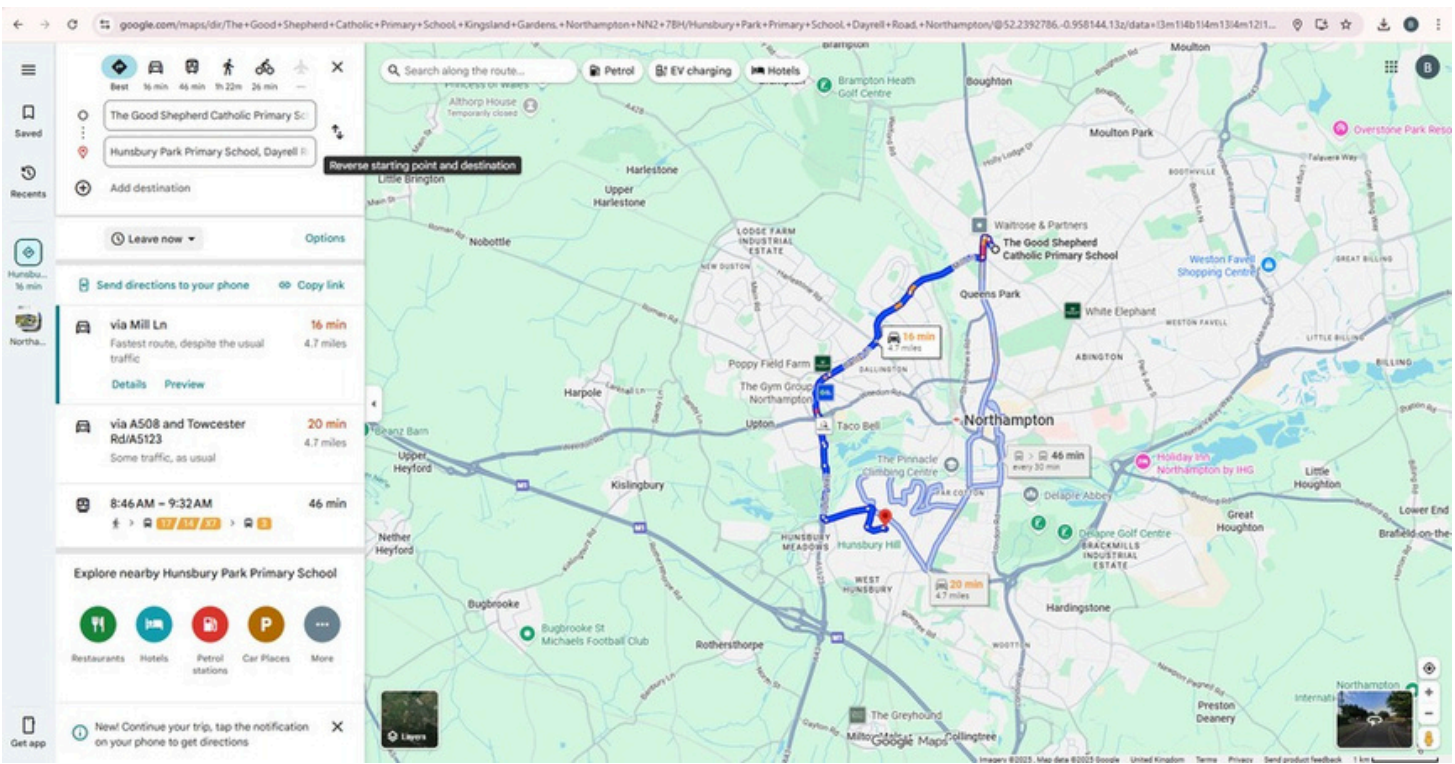
Our Multi-Sports Club offers children the opportunity to explore and enjoy a variety of sports, including football, basketball, rugby, hockey, athletics, gymnastics and more. Designed for all skill levels, our program focuses on developing athletic abilities, promoting teamwork, and fostering a love for physical activity. Experienced coaches will guide children through fun and engaging activities, ensuring everyone can participate and grow. The Multi-Sport Club is a fantastic way for your child to stay active, make new friends, and discover their favourite sports. We look forward to welcoming your child to this dynamic and inclusive club!



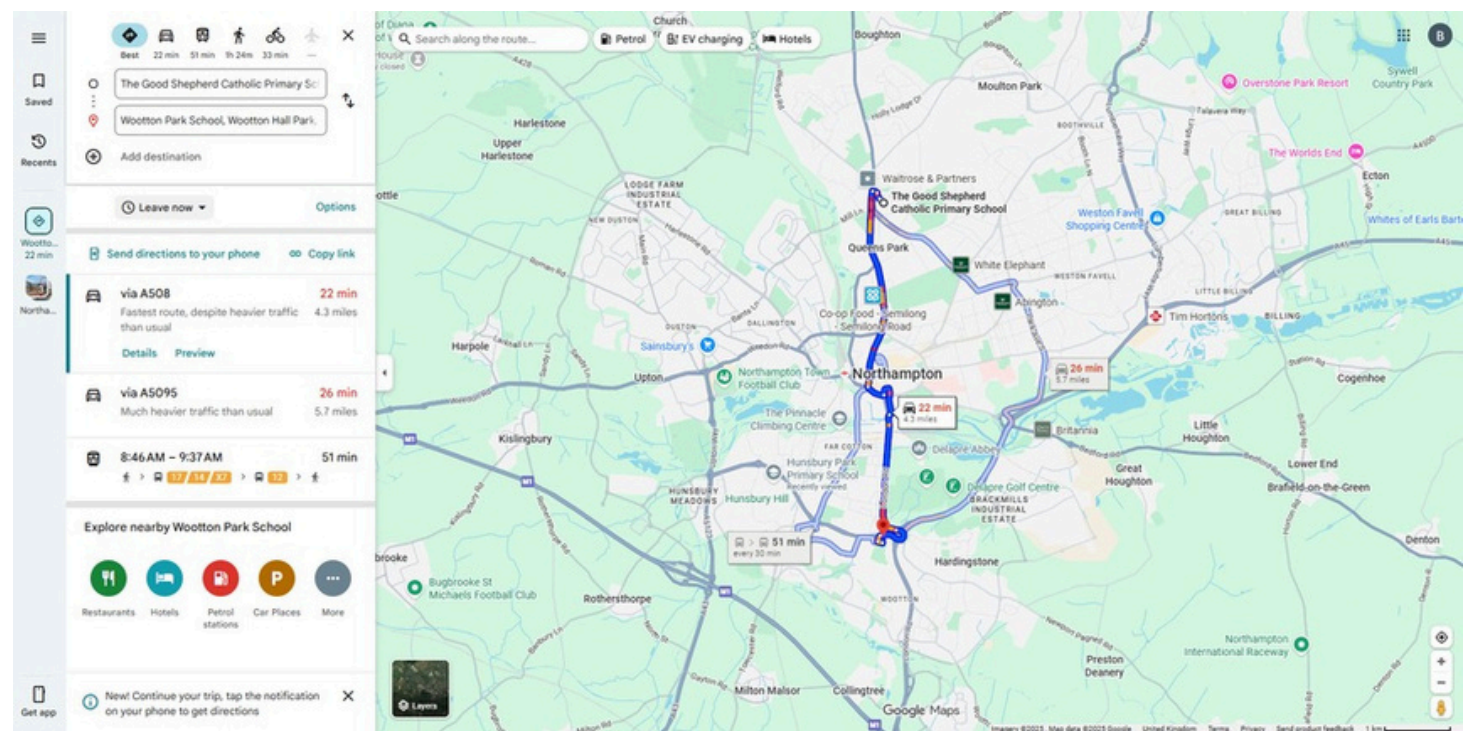
This creative club invites children to unleash their imaginations and express themselves through various artistic mediums. Under the guidance of our Rhino coaches, children will explore painting, drawing, sculpting, and more in a supportive and inspiring environment. From colourful masterpieces to unique handmade crafts, our club offers endless opportunities for self-expression and artistic growth. Join us for fun-filled sessions where creativity knows no bounds, and where every creation is celebrated.

**PLEASE NOTE:** We are offering different activities on different dates at different venues! If there is an activity not on at your venue then please check out our other venues that we are offering for camp. Below show directions and details of where our other venues are from The Good Shepherd Primary School.

**Hunsbury Park Primary School, Dayrell Road, NN4 9RR (16 minutes away)**



**Wootton Park School, Wootton Hall Park, NN4 0JA (22 minutes away)**



**Blisworth Community Primary School, Courteenhall Road, NN7 3DD**  
**(22 minutes away)**



**Please find below the QR codes and details for other venues we have on offer which will take you directly to the venues HAF page for you to sign up if The Good Shepherd isn't suitable for you.**



Blisworth



The Good Shepherd



Newbottle & Charlton



Wootton Park



Hunsbury Park



St Luke's